



Integral IP MX.

Modular Fire Safety.

FIRE ALARM

www.schrack-seconet.com

SCHRACK
S E C O N E T

INTEGRAL IP

MX



Protecting human life and assets.



These high tech devices detect fires at an early stage, raise the alarm for people in danger, mobilise the emergency services without delay and provide them with the necessary information in an efficient manner. At Schrack Seconet, we develop fire alarm systems with a high degree of innovation, which handle all the challenges placed upon them, and have convinced customers in Austria and abroad for decades of our expertise as manufacturers of systems conforming to the highest quality standards. Our systems have already made us market leaders in many countries.

in Austria and Germany. Strict Austrian and European standards and many nation standards and directives form the set of rules for preventive fire safety. Schrack Seconet products generally also greatly exceed such requirements. This ensures, therefore, that Schrack products are approved in many countries.

“Usability Engineering”.

The destruction of data, assets and business premises by fire can disrupt a company's ability to conduct business substantial or even endanger companies. We can realise the optimal solution for you – regardless of the type of building

Preventive Fire Safety – a must!

Fire and smoke have fascinated and interested people since the beginning of time. They provide warmth, a feeling of comfort and can be used in the preparation of food. However, in their negative sense, fire and smoke can also pose a serious threat to human life and valuables. Fire safety has therefore played a valuable role ever since people have started living side-by-side one another. It has taken on various forms, dependent on the whole on what technologies were available. The diligent night-watchman fulfilled his role, just as construction regulations did, which were intended to prevent the spread of fires in a similar way as the first mechanical fire detectors did.

The highest level of fire safety.

Today the task of preventive fire safety is carried out by fire alarm systems that have been optimized and technologically developed specially for the task.



European without compromises.

Investment in research and development and co-operation with testing centres and professional bodies within the sector make a considerable contribution to our attaining our goal: to construct the most modern and safest fire alarm systems. A new yardstick is set with every generation of systems. The Integral IP MX fire alarm control panel is therefore the latest consequential evolution of the Integral system. In strict opposition to globalisation trends that have emerged in the last few years, we do not purchase our components from countries where labour is cheap, and prefer to focus on the “Made in Europe” hallmark of excellence. Integral systems are unique in their sector, being developed and manufactured exclusively

you have to protect! Sensitive production areas can be monitored just as successfully by our systems as buildings in the hotel industry, large production areas and shopping malls. We protect historic buildings using particularly aesthetic solutions.



INTEGRAL IP

MX



From a vision to reality.



Growing to meet all requirements.

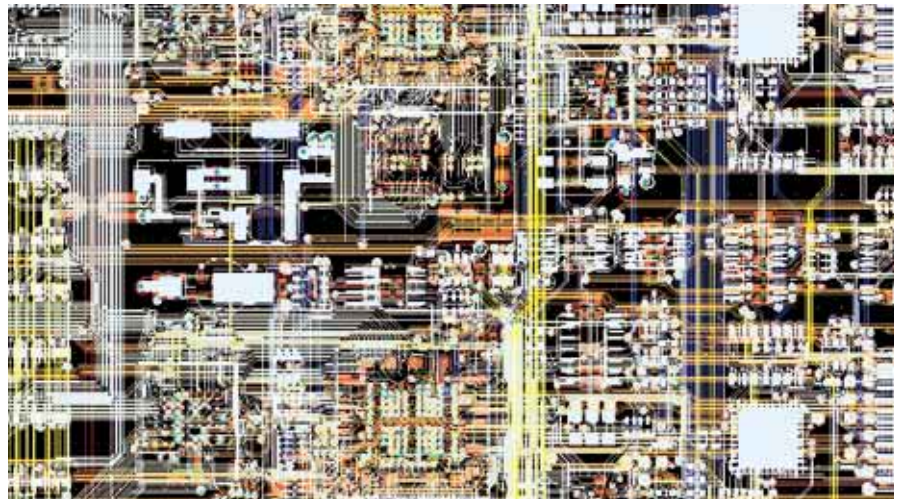
In the beginning is the vision! Our remit is to build the safest and most modern fire alarm systems. All our efforts are channelled towards achieving this goal. To do so, a change of paradigm is necessary, leaving previous schools of thought behind, as well as adopting new creative approaches to finding solutions. The success of this approach is proven in reality. By striving unstintingly for quality and by implementing the most modern technologies, we have succeeded, time and time again, to set high standards, and new yardsticks for the market.

Many technical innovations open up new horizons.

The technology behind it is cutting-edge, the principle has been proven across millions of years. In the development of our fire alarm systems, we use nature as our role model. Evolution has developed incredible solutions, and the potential for optimization from one generation to the next has been unlocked. In this way, the Integral family also improves in performance thanks to newly developed technologies. The Integral IP with all its technical innovations is the platform for a breakthrough to a new dimension in preventive fire safety.

The Integral IP MX sets new trends and standards.

The Integral IP MX fire alarm control panel has been optimized to provide more functions and has been fitted with forward-looking technical features. Integral LAN is the new networking method, which makes it possible to connect up to 16 subcontrol units together into a logical unit in the form of a mesh network. Network security reaches a new level, with optimal availability and considerably increased exchange of data as well as a flexible and almost unlimited topology. The new standard and network operating panel, the Integral MAP,



A communications genius thanks to the latest technology.

The Integral IP MX uses the principle of decentralized intelligence with an autonomous search for open information channels and more precise, to the point communication. Modular construction and backward compatibility allow the flexible and unrestricted adaptation to the size of the building and to existing systems. Redundancy guarantees 100% system availability. The increasingly complex requirements placed on technology have been satisfied by further miniaturization of components and increased packing density. To make this possible, Schrack Seconet also uses the latest Microvia technology in the Integral IP.

extended operability with many new functions. Up to 250 devices, a loop length of 3,500 metres, considerably shorter start-up times as well as a new control interface are all made possible by Integral X-LINE technology. Finally the new Integral software offers a completely new user interface and a multitude of new functions.



INTEGRAL IP

MX



Unbeatable thanks to double security.



Integral IP MX – 100% Redundancy as a principle.

A fire alarm control panel's most important job is to efficiently detect a fire at the earliest possible point in time. Schrack Seconet systems also distinguish themselves with a unique feature – they offer 100% redundancy. This means that all electronic elements and components are present in duplicate so that the system remains fully functional even in the event of a fault occurring.

Hardware redundancy for double security.

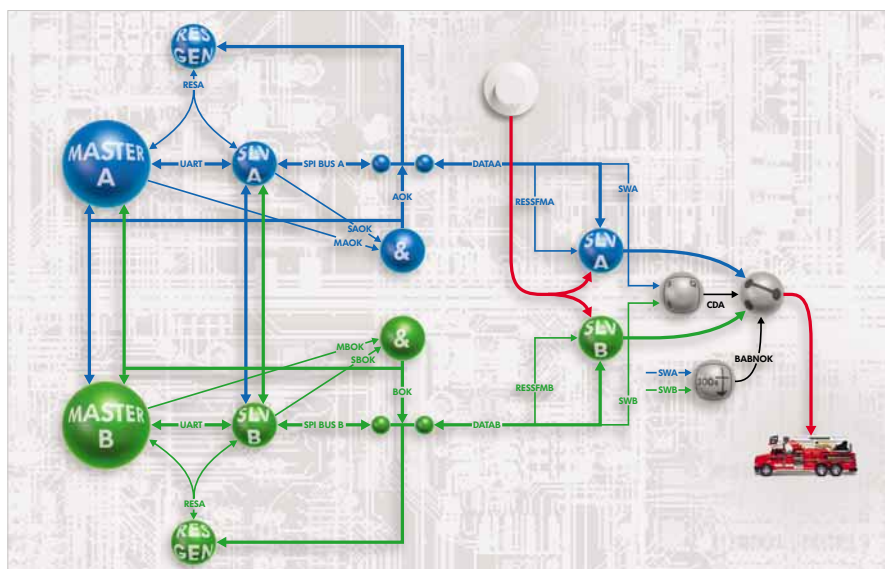
The fire alarm control panel settles the issue for itself. And you will not notice it doing so. As soon as a fault occurs in the active half of the system, the Integral IP recognises this immediately, and automatically switches over internally to the system which is ready for use. The fault is indicated on the operating panel, while all functions of the entire system remain completely available and unimpeded. Only full redundancy is able to guarantee the system's performance and stability at the highest level.

Software redundancy for double performance.

Software redundancy is the congenial partner to hardware redundancy. The double level of security forms an important factor for the monitoring of the system. Double performance is only possible if the system is fully-functional under every condition. State-of-the-art technology delivers high tech performance on a minute by minute basis while in operation. Redundancy increases security, by guaranteeing that the system is always able to fulfil the necessary tasks as well as

The system's advantage: backward compatibility.

A fire alarm system must be effective and perform well, but must also be flexible in its construction. We offer the perfect solution. All systems are forward and backward compatible. This means that all technical components of a system developed and installed by Schrack Seconet can communicate with one another, even when different parts are from different generations. The operator of a system can continue to use his existing components while still being



possible, such as detection, controlling, alarm forwarding, controlling lifts, closing fire zones and others.

Unbeatable and fail-proof.

The more independently a system can function, the greater the level of security. In preventive fire safety, there is the issue of how much intelligence can be integrated into the system. In the Integral IP system, control panels, detectors and other system components do the "thinking" together. Each device chooses the best connection paths in order to ensure seamless communications with system partners. This increases the security by a substantial amount, and reduces the risk of a system failure substantially.

able to participate in technological progress. Modernisation on a step-by-step basis is also possible quickly and without problems.



INTEGRAL IP

MX



Reacts safely and quickly.



The Integral IP MX speaks an easy to understand language.

The Integral IP MX is not only a fire alarm control panel of the highest degree of precision, but is also a sensitive communication device. It gives clear and simple information and instructions. And it also speaks to users in their mother tongue. In every one of our foreign markets, the required language can be fed into the system. This has the inestimable advantage that in extreme situations – such as ones encountered when the alarm goes off, that the system can communicate with the involved partners clearly and in a focussed way.

Attractive and informative.

The Integral MAP operating panel has a fantastic new design, is extremely user-friendly and is very resistant against environmental influences with its plastic front. Greater screen contrast improves the readability and therefore assists when taking reactive action. The Integral MAP makes suggestions for every procedure, as all the buttons and the display offer all the appropriate options and the user then knows straightaway what is to be done. Freely assignable functions ensure that it is also possible to customise the operating panel accordingly.

Developed for mankind.

Mankind places great value on safety. The more organised society began, the greater the desire became for this requirement to be addressed. The lawmaker took account of this by among other things putting together a range of standards which apply to preventive fire safety. At Schrack Seconet, we also contribute to making the world a safer place. We demand that fire alarm systems must be easy to understand and simple to operate. Our systems and solutions are conceived for people and for increasing their safety. They create confidence and also are of the highest technological level. Schrack Seconet products can be relied upon completely.



Simple and intuitive operation.

The Integral MAP operating panel can be used as a standard or network operating panel, and is used for the easy operation of the fire alarm system. It offers a structured overview of all system processes and is attractive thanks to its high level of user-friendliness. The operating interface and display texts are available in more than 20 languages, and it is possible to switch between up to four different languages while the system is in operation. The simple and intuitive operating guide makes work for users, expert staff and the emergency services a lot easier. The operating panel ensures that required information is always available and can also be used remotely.

All incidents and procedures can be documented quickly and clearly on paper using the integrated log printer.



INTEGRAL IP

MX



Intelligently networked security.

Integral LAN with mesh network.

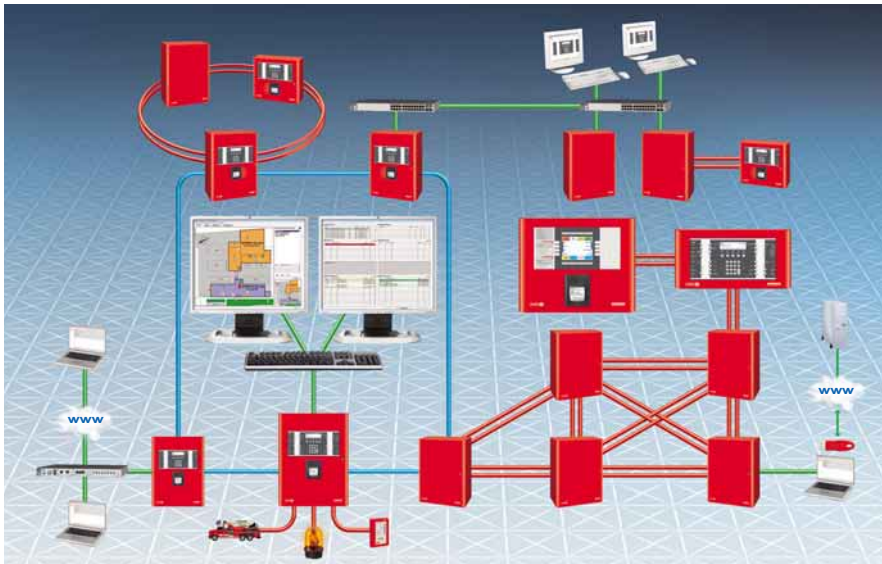
High speed, direct routes, clear targeting, the highest level of security against failure – all the basic requirements placed on a fire alarm system. The new Integral LAN mesh network fulfils all these requirements. Its basic principle is to establish multiple connections between the individual network nodes. Even in the event of multiple – only imaginable in theory – connection faults, every system device still always has one connection to the network. This system increases security many times over and reduced the risk of failure to zero, and also creates greater



Using this network protocol, intelligent systems can be uniquely addressed and can connect with one another in a meaningful way. The Integral IP is equipped with all required interfaces and is well equipped for the future.

Flexibly creating networks.

Various freely definable topologies can be realised with the Integral LAN mesh network when setting up the fire alarm system. Network modules with different interfaces such as RS485, optic fibre or DSL are all available. The high data transmission speed allows completed new applications, such as software updates during ongoing operation. The redundancy of the systems and networks by Schrack Seconet is hitherto without equal. A further milestone was achieved in the development of fire alarm systems with the development of the mesh network.



Direct communication – simple and clear.

The system offers practically unlimited possibilities for communication. The Integral IP MX can also be integrated into the SecoLOG fire alarm management system. Then it is easy to have a normal overview of the entire system. Remote access to the control panel is also possible over the Internet and Intranet using “Remote Access”. It is also possible to have a virtual operating panel on the PC. This supports the user and allows the user to be kept informed at all times, as it is possible to control the system and analysis status reports from anywhere.

flexibility in building networks and forming structures. Up to 16 fire alarm control panels can be connected in the form of such a fail-proof mesh network.

Forward-looking IP architecture.

Standards and directives demand exclusively usable networks for fire alarm systems. The safety of human life and assets has absolute priority. For this reaction notification of the emergency forces is only permitted over such a network. It is, however, possible to incorporate the Integral IP MX in to the IT infrastructure of a building and to use existing communications structures. For this reason, the control panel has been fitted with IP (Internet Protocol) technology. IP technology belongs to the future. IP forms the foundations for the Internet, and therefore is the mostly widely spread technological solution for various communications tasks.



INTEGRAL IP

MX



It grows to the most difficult conditions.



Effective protection and monitoring.

Compatible – customisable – networkable! These three properties characterise the Integral IP MX accurately. The Integral family extinguishing system control panels can be networked to each other and incorporated into a fire alarm control panel network. Such a system solution within a single unit provides multiple benefits for the user. Users can combine both solutions in a single system and can also connect it to an Integral LAN. In addition to cost-saving advantages in the construction process and the fact that combined systems requires less space,

Reacts reliably and quickly.

When exposed to extreme conditions, a high level of resistance is required with regard to electromagnetic compatibility (EMC) and against dust, moisture, or extreme temperatures. These influences are unable to disrupt the Integral IP MX fire alarm control panel. Even when exposed to such conditions, it remains fully functional, since the robust nature of the system and cabinet ensure that it is able to withstand the most challenging of conditions. Self-test routines are used to ensure that any faulty functioning does not go undiscovered for long. Any system state deviating from the norm is detected and reported very out delay.



Certified and approved.

Like all preventive fire safety systems and products Schrack Seconet launches, the control systems for extinguishing systems fulfil and exceed the requirements of all regulations laid out in national and European standards. They are approved in accordance with EN 12094, which regulates the requirements and testing procedures for automatic electronic control and delay units, and has been in force since 2004. The Integral IP system as a whole conforms to EN 54, which dictates the requirements, testing procedures and functions for fire alarm control panels for use in fire detector and fire alarm systems installed in buildings.

For integration in every environment.

The Integral IP MX fire alarm control panel, with a reputation as one of the safest and most flexible fire alarm systems on the market, earns this accolade thanks to the many possible additional functions. A matching control system for extinguishing systems can also be integrated. The automatic control and delay system can control all current types of stationary extinguishing control panels as a single or multizone extinguishing control panel. The system's redundant construction also allows the integration of up to 32 extinguishing zones in conformance with standards.

servicing can also be carried out more efficiently. All functions and controllers can be freely programmed and networked with other functions in the system. Links can be established between detectors, modules and fire alarm devices over loop circuits, subcontrol units and fire alarm control panels. The flexibility of the system and the directives for approval allow combined use as a fire alarm control panel and extinguishing system control panel or use solely as an extinguishing system control panel.



INTEGRAL IP

MX



Integral X-LINE – Peripherals without limits.

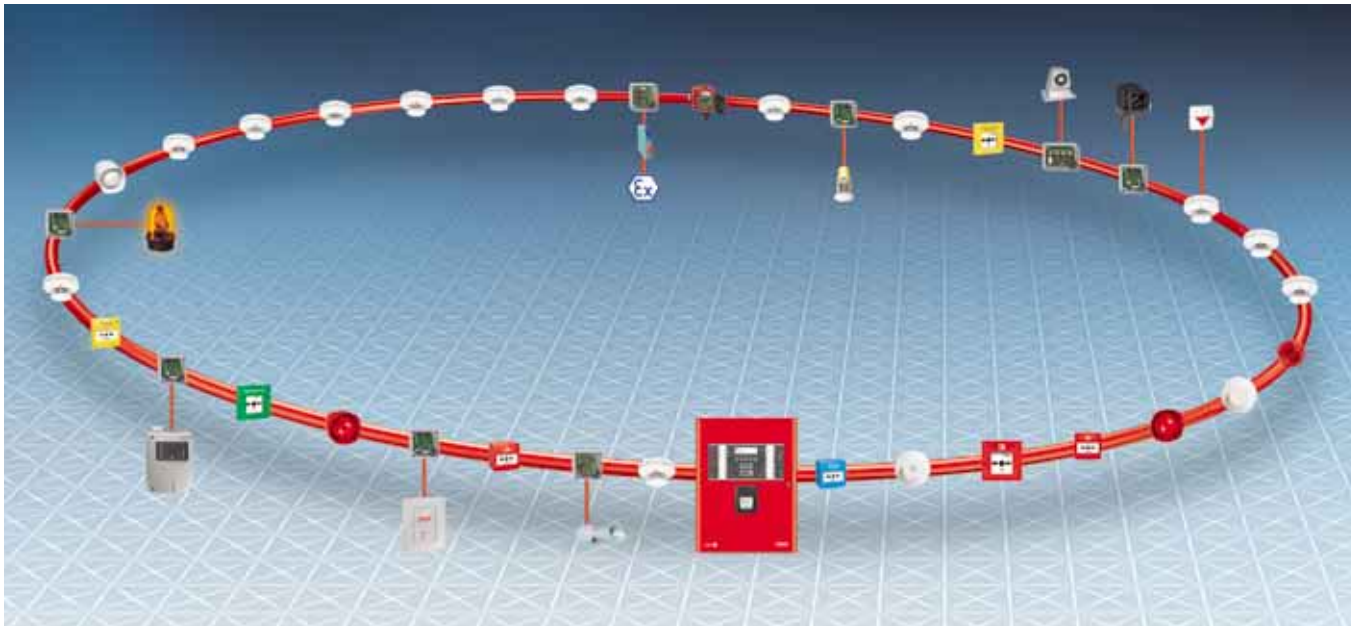
New routes for peripherals.

The newly developed Integral X-LINE guarantees that unlimited peripherals can be connected, and incorporates all system components, such as detectors, fire alarm devices, acoustic alarm notification devices or other control mechanisms, allows special detectors e.g. smoke aspirating systems to be connected and allows twice as many devices to be connected, thereby increasing capacity.



High flexibility and compatibility.

The Integral IP MX fire alarm control panel excels thanks to its high level of flexibility and compatibility. It can therefore be extended and upgraded at any time for purposes required in the future, and also be adapted to suit the individual requirements of the user. Thanks to the compatibility of our systems, systems that have already been deployed can also be upgraded and thereby also benefit from the advantages of the Integral IP MX. The high degree



Optimizing proven technology.

We have optimized our tried and tested technology for you. Larger loop circuit lengths allow a greater number of modules and components to be used, thereby allowing a further increase in capacity and monitoring. This allows us to adapt optimally to the building to be protected.



Increased capacity for your safety.

Up to 250 devices per loop, increased loop lengths of up to 3,500 metres as well as very short start-up times bring the proven loop circuit technology to a higher plane of development. The reliability is proven by complete transmission security, seamless monitoring and constant evaluation of current states. The network-based co-operation of the individual components and the harmonious structure in the system are what makes the Integral IP MX so strong and efficient. This sets it apart from all other fire alarm control panels.

of backward compatibility ensures that new system devices can be connected to existing components without any problem. If necessary, additional required components can also be subsequently connected. This permits an upgrade of existing systems to the current standard technology at any time as required.



INTEGRAL IP

MX

**FIRE
PROTECTED
BY**

SCHRACK

S E C O N E T

Reliable servicing included.



Routine Servicing and Support.

Our services do not end with the installation of a fire alarm system. Our comprehensive customer service is available to tackle all kinds of issues. From inspections to maintenance or even a complete overhaul - our staff members check that systems are working on-site. In our dedicated training centre in Vienna and in various international training locations, our customers and partners are trained how to handle the systems. Technical queries can be answered around the clock using our telephone hotline.

Made in Europe.

We are constantly developing our systems further. They also represent the state-of-the-art, and satisfy standards well above those of legal requirements and standards. High quality is a particular concern of ours, which we ensure by not outsourcing manufacturing to low-cost countries. The level of development and production is no as high anywhere else in the world as in Europe. For this reason, the Integral IP MX, like all Schrack Seconet products, is developed in Austria and produced in Germany. European quality is appreciated by customers from every sector around the globe.

Knowledge and know how.

Schrack Seconet has collected decades of knowledge and know how from research and development activities in preventive fire safety. Substantial investments in research and development have ensured that our products not only always mirror the state-of-the-art in terms of technological development, but allow us to take a pioneering role in working to ensuring security of people and assets. At the same time, we are also intensively involved in national and international professional associations in the sector, EU committees for high quality standards and cooperate with technical universities, fire prevention bodies, fire brigade associations and testing centres for system certification. The interplay of experience and the latest technology is a central aspect of our activities to ensure the security of our customers.



Our customers are the best possible reference for us.

Our company headquarters are located in Vienna, with customers all over the world valuing the excellent quality of our products. Schrack Seconet has subsidiaries in Poland, Sweden and Hungary as well as representative offices in Romania, Russia, Slovakia, the Czech Republic and Turkey. In many countries in Central and Eastern Europe as well as in Asia, our customers are looked after well by a network of local partners.





Fire alarm control panels.

The Integral IP MX system is a modular, decentrally constructed system, comprising of individual components, programmed and configured according to the requirements of the individual system in question.

Each control panel forms an autarchic unit with its own power supply and battery backup supply, to which external operating panels, fire brigade control panels, printers etc. can be connected as well as detector zones and controllers. To ensure system security, all components and electronic elements are fitted fully-redundantly (in duplicate).

Depending on the size of the system, up to 16 control panels can be spread around the building and networked using an Ethernet mesh network. Free cabling topology allows the optimum adaptation of the mesh network to prevailing structural conditions.

Integral IP MX control panels can be directly connected to the building's IT infrastructure, with Internet and Intranet access to them possible at no extra expense. Various parallel indicator panels or superordinated central indication devices can, as long as they are not involved in the alarm notification of the emergency services, also use the existing communications PC network routes.

The Integral IP MX is available in various types of cabinet - with or without a log printer, as a black box or with an extra built-in LED indicator panel.

Dimensions (all types): 600 x 445 x 225 mm (HxWxD)

Case colour: red RAL 3000

Integral MAP external operating panels.

Available with or without log printer for connection to all Integral IP control panels. Up to 8 external operating panels can be connected to a control panel via its own data bus, up to 1,200 m away from to the control panel. User interfaces and display texts are available in 20 languages.

Dimensions (HxWxD): 230 x 445 x 35 mm

or 360 x 445 x 45 mm (with printer).

- Display (6 lines, 40 characters per line)
- Conforms to all options of EN 54-2:2006
- Can be deployed as main network operating panel
- Toggling between up to 4 languages in normal operation
- External data bus connection for additional indicating and operating devices
- freely-programmable buttons and LEDs
- individual user management with password and user level

Unlimited possibilities to expand.



Electronic Control and Delay Unit.

Due to the special redundancy concept and the particular high level of security, ensured for a wide range of uses, the Integral IP MX system can also be used as an Integral IP MXE extinguishing system control panel or as an Integral IP MXF/MXE combined fire alarm and extinguishing system control panel. Special cabinet and external operating panels versions are available with an additional LED parallel indicator tableau. The Integral IP MXE then conforms to the terms of the standards and directives EN 12094-1 and VdS 2496, and is also suitable and approved for controlling more than one extinguishing zone and for monitoring the following fire extinguishing systems:

- CO₂ high & low pressure extinguishing systems where life is or is not endangered.
- Inert gas and argon extinguishing systems where life is or is not endangered.
- Water spray and mist water deluge systems
- Pre-action sprinkler systems
- Sprinkler systems
- Chemical extinguishing systems

High End Operating Panel.

The High-End Operating Panel with a VGA colour display and function keys allows the easy operation of a fire alarm system and a structured overview of complex SecoNET fire alarm networks. The user interface and display texts are available in 20 languages.

Dimensions (HxWxD): 230 x 445 x 35 mm
or 360 x 445 x 45 mm (with printer).

Fire brigade control panels & indicator panels.

In addition to Integral IP operating panels, various other versions, varieties of fire brigade control panels (e.g. pursuant to ÖNORM F 3031, DIN 14662, SN054002, etc.), and LED indicator panels are available.

Detailed information is available upon request.



SCHRACK SECONET AG

Headquarter Austria: A-1122 Vienna, Eibesbrunnergasse 18 • Tel.: +43-1-81157-0 • office@schrack-seconet.com

Technical support Fire Alarm Systems Tel.: +43-1-81157-570 • Technical support Health Care Systems Tel.: +43-1-81157-525

Branch offices Austria:

A-6850 Dornbirn, Sebastianstraße 13a • Tel.: +43-5572-51199-0

A-8055 Graz, Neuseiersberger Straße 157 • Tel.: +43-316-407676-0

A-6021 Innsbruck, Valiergasse 56 • Tel.: +43-512-365366-0

A-9020 Klagenfurt, Feldkirchner Straße 138 • Tel.: +43-463-429362-0

A-4060 Leonding-Hart, Kornstraße 16 • Tel.: +43-732-677900-0

A-5020 Salzburg, Vogelweiderstraße 44a • Tel.: +43-662-887122-0

Czech Rep. • CZ-100 00 Prague 10, V Úžlabíně 1490/70 • Tel.: +420-2-74782284

Hungary • HU-1119 Budapest, Fehérvári út 89-95 • Tel.: +36-1-4644300

Poland • PL-02-583 Warsaw, ul. Wołoska 9 • Tel.: +48-22-3300620

Romania • RO-021723 Bucharest, Sos.lancului nr. 6A, Sector 2 • Tel.: +40-21-6533246

Russia • RU-129626 Moscow, Ul. Staroalexejevskaja 5 • Tel.: +7-495-510 50 15

Slovakia • SK-83003 Bratislava 33, P.O. Box 31, Odborárska ul. 52 • Tel.: +421-2-44635595

Sweden • SE-145 84 Norsborg, Borvid Business Center • Tel.: +46-8-680 18 60

Turkey • TR-34722 Kadıköy-İstanbul, Sokak no.: 5/12 • Tel.: +90-216-345 51 99

Partner in (BG) (BH) (BY) (CH) (CY) (D) (DK) (E) (EST) (ET) (F) (GE) (GR) (HR) (I) (IL) (IND) (IR) (KS) (KSA) (KW) (KZ) (L) (LT) (LV) (MK) (NL) (P) (PK) (RB) (RL) (RO) (SLO) (SRB) (TM) (UA) (UAE) (UZ)

FIRE ALARM

www.schrack-seconet.com

SCHRACK
S E C O N E T